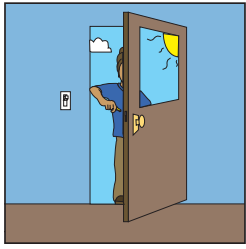
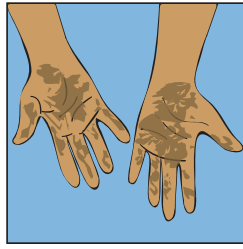


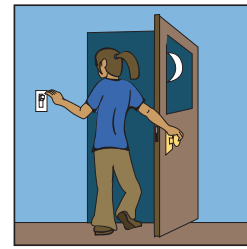
When To Wash Your Hands



Upon arrival for the day, when moving from one child care group to another

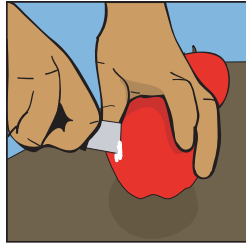


When hands are **visibly dirty**

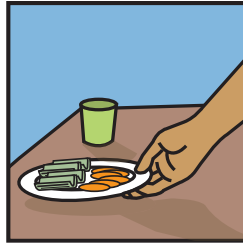


Before going home

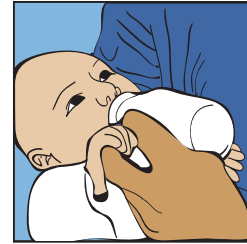
Before and After



Food/beverage preparation, handling food,



Serving food



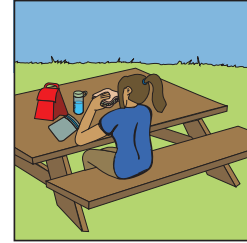
Bottle feeding, feeding a child



Giving medications



Playing in water used by more than one person



Eating food

After

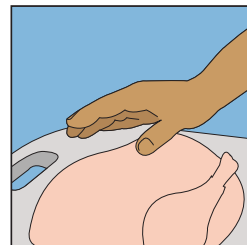


Using the toilet, diapering and toileting



Handling body fluids:

- nasal mucus
- blood
- saliva
- vomit



Handling uncooked food, especially raw meat



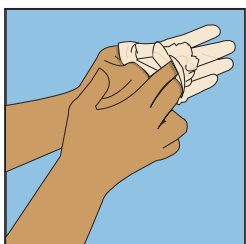
Handling animals or animal waste



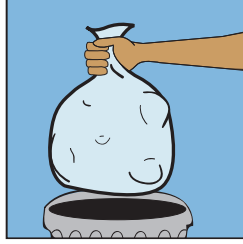
Playing in sandboxes



Being outdoors



Removing disposable gloves



Handling garbage



Cleaning